

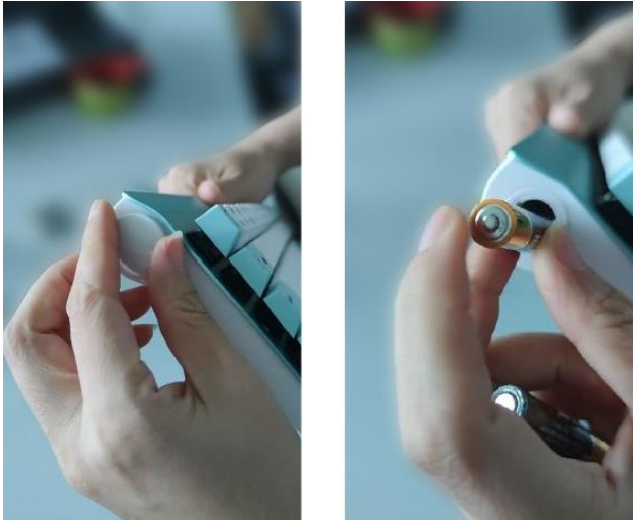


W O M B A T
INSTRUCTIONS

**PAIRING & RECONNECTING YOUR
WOMBAT
GINKGO PRO KEYBOARD**

- ▶ **RADIO FREQUENCY (RF)**
- ▶ **BLUETOOTH**

PAIRING YOUR WOMBAT KEYBOARD VIA RADIO FREQUENCY (RF)



1 INSTALL AAA BATTERIES

- Locate the battery cover on the lefthand side of the keyboard. Turn counterclockwise to open.
- Load two AAA batteries into the slot > the plus (+) end of each battery facing the slot opening.



2 USB-C USERS

Add the Type A-to-Type C adapter to the top of the Type A RF receiver.

Plug into your USB-C computer port.



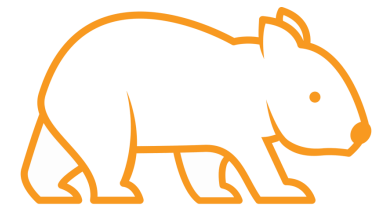
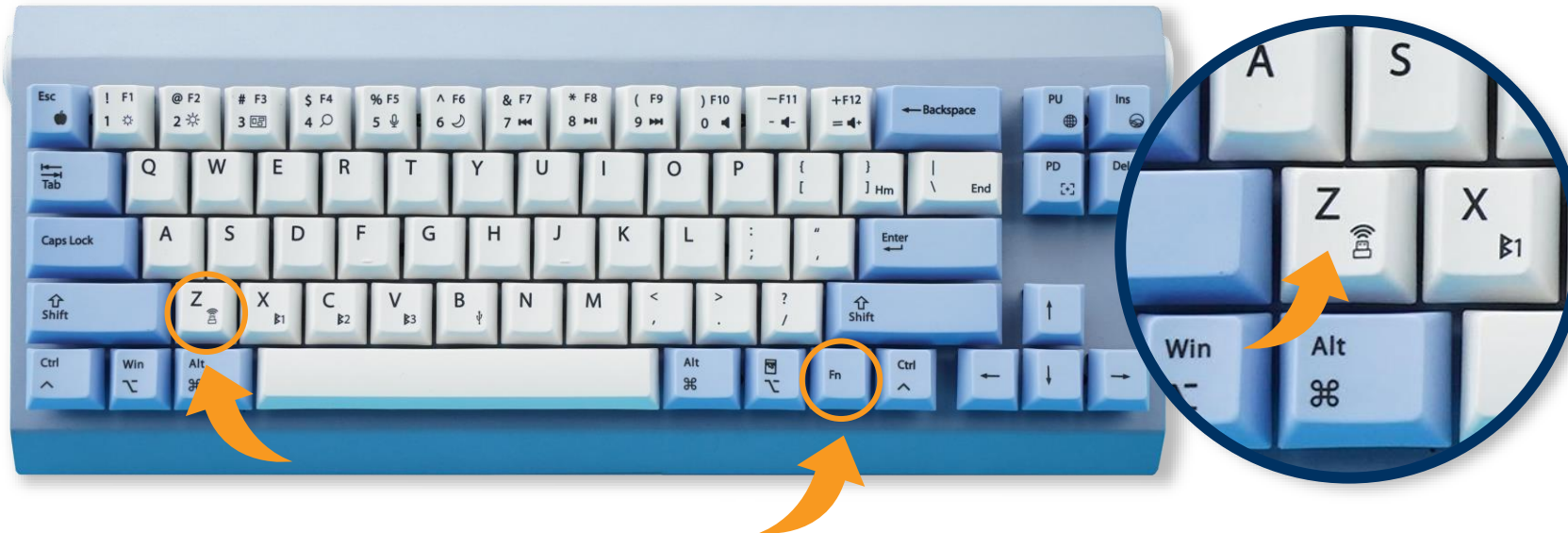
USB-A USERS

Plug the USB-A receiver into the USB-A port of your computer.

PAIRING YOUR WOMBAT KEYBOARD VIA RADIO FREQUENCY (RF)

3 TO PAIR THE RF WIRELESS RECEIVER, PRESS & HOLD FN +  FOR 3 SECONDS

- Please note our RF receivers are generally pre-paired with our keyboards at the factory. In the event your receiver and keyboard are not linked, press and hold Fn + Z for three seconds.
- The Z key LED will blink **twice** then turn off.
- The keyboard is paired, and you may begin typing.



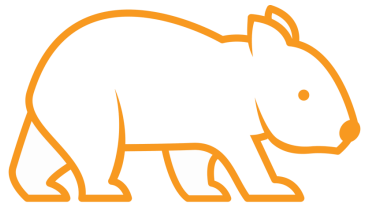
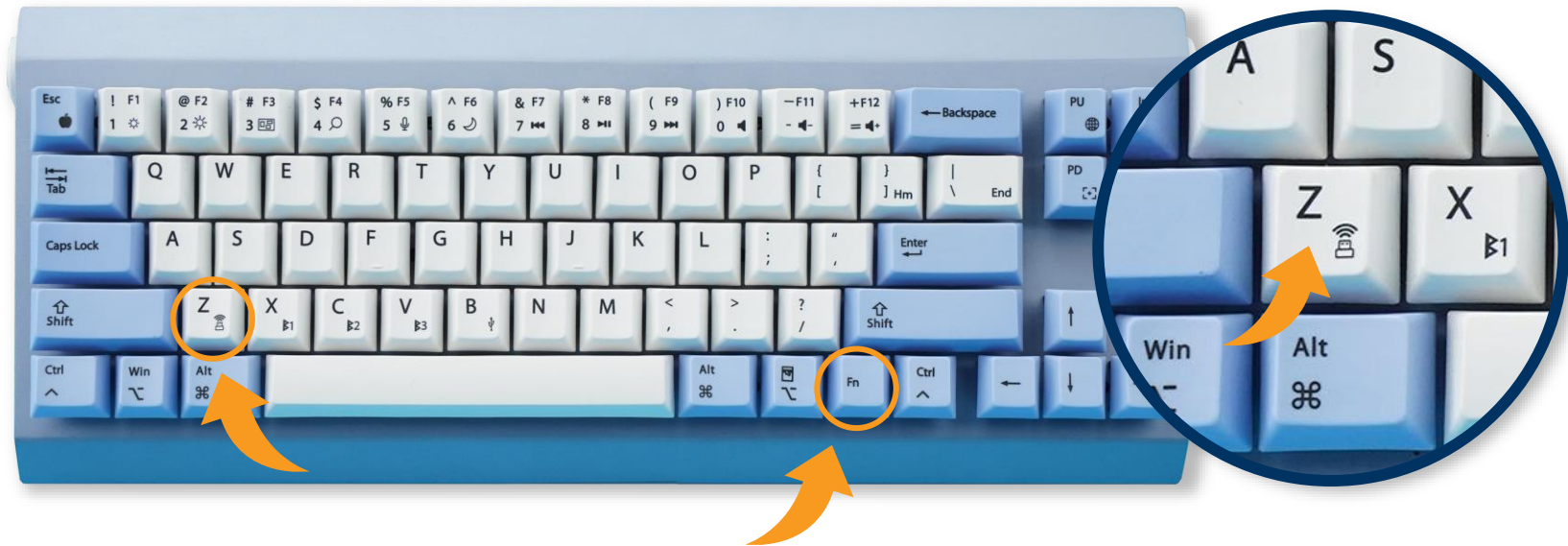
RECONNECTING YOUR WOMBAT KEYBOARD VIA RADIO FREQUENCY (RF)

4 TO RECONNECT THE ALREADY-PAIRED RF WIRELESS RECEIVER,

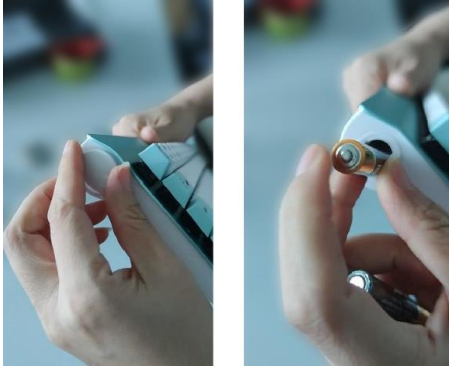
PRESS & HOLD FN +



- Once paired successfully the Z key LED will blink **twice**, and you may begin typing.



PAIRING YOUR WOMBAT KEYBOARD VIA BLUETOOTH



1 PREPARATION

- Close all Bluetooth setup dialog boxes. If any Bluetooth dialog boxes are open, close them before proceeding with pairing.
- Ensure batteries are properly installed in the keyboard (see first page of instructions).

Connect up to three devices to your keyboard via Bluetooth.

Pair your first device:

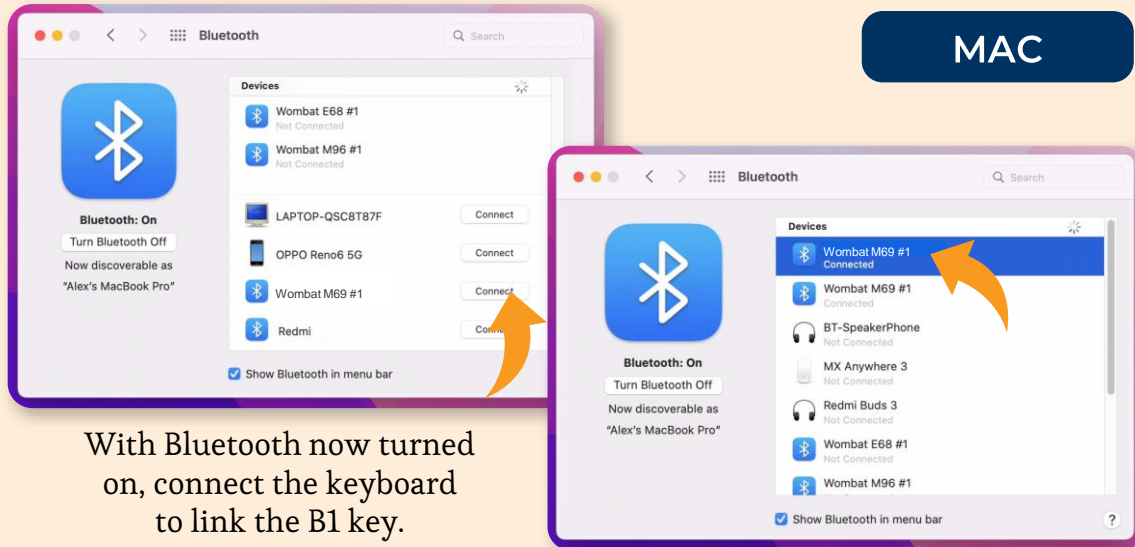
2 PRESS & HOLD FN + FOR 3 SECONDS

- The corresponding B1 LED will blink **twice** then turn off.



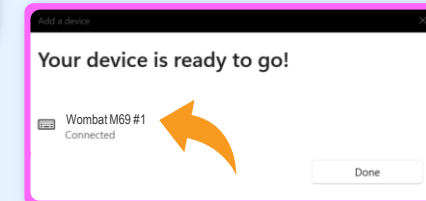
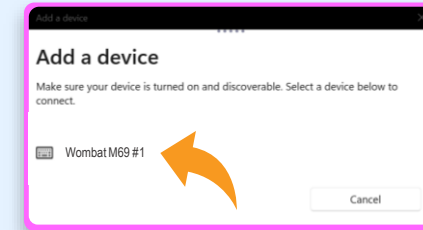
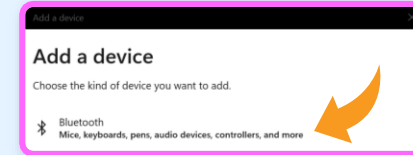
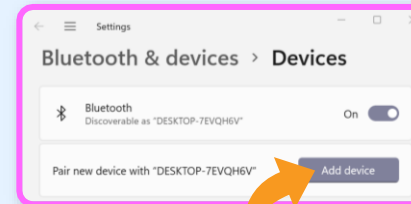
PAIRING YOUR WOMBAT KEYBOARD VIA BLUETOOTH

3 CONNECT TO BLUETOOTH



Wombat keyboard is connected and ready for typing.

WINDOWS

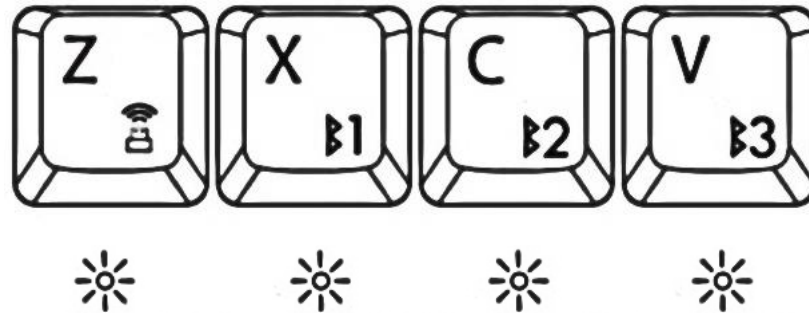


4 REPEAT THE SEQUENCE FOR  AND  IF YOU WISH TO CONNECT THE KEYBOARD TO OTHER HOSTS

RECONNECTING YOUR WOMBAT KEYBOARD VIA BLUETOOTH

5 RECONNECT TO A PAIRED COMPUTER HOST

- Press Fn + B1, or B2, or B3 and wait for the corresponding LED to blink once.



The LEDs correspond to the three bands of Bluetooth



W O M B A T

KEY SOURCE INTERNATIONAL

 1 (510) 562-5000

 info@wombatkeyboards.com

 www.wombatkeyboards.com