

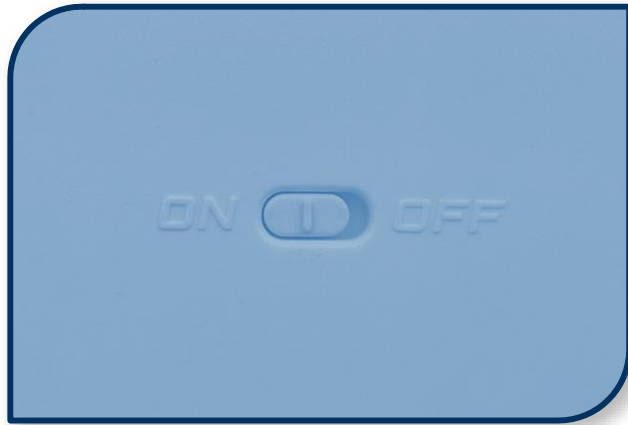


W O M B A T
INSTRUCTIONS

PAIRING & RECONNECTING YOUR
WOMBAT
MAPLE PRO KEYBOARD

- ▶ **RADIO FREQUENCY (RF)**
- ▶ **BLUETOOTH**

PAIRING YOUR WOMBAT KEYBOARD VIA RADIO FREQUENCY (RF)



1 CHECK THE BATTERY CHARGE

- On the underside of the keyboard, turn the switch to the On position.
- If the three keyboard LEDs blink once, the internal lithium battery is charged and ready.
- If the LEDs do not blink, the keyboard must be plugged in via USB cable and charged for a minimum of 5 hours before connecting wirelessly.

2 USB-C USERS

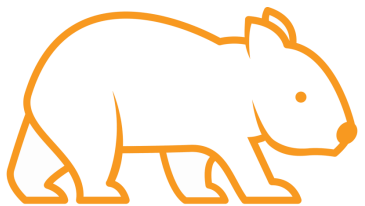
Add the Type A-to-Type C adapter to the top of the Type A RF receiver.

Plug into your USB-C computer port.



USB-A USERS

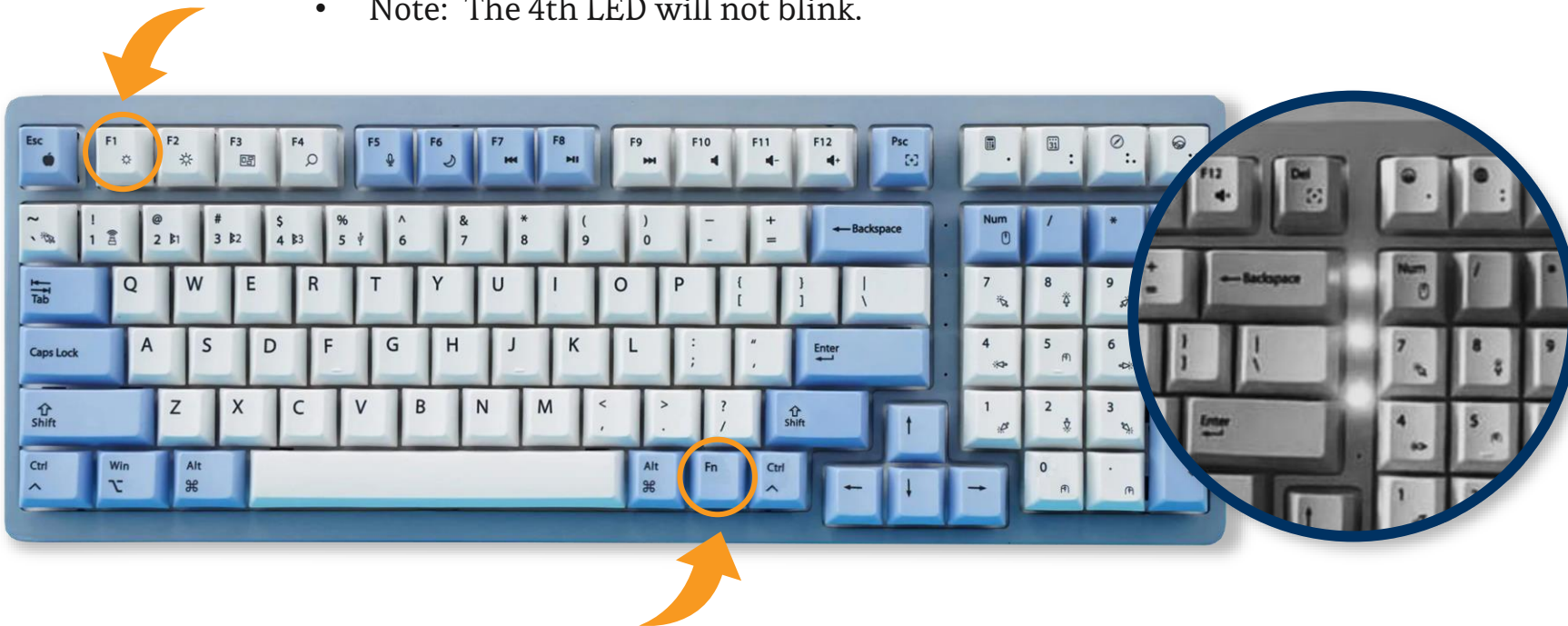
Plug the USB-A receiver into the USB-A port of your computer.



PAIRING YOUR WOMBAT KEYBOARD VIA RADIO FREQUENCY (RF)

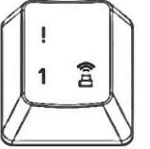
3 TO PAIR THE RF WIRELESS RECEIVER, PRESS & HOLD FN +  FOR 3 SECONDS

- Please note our RF receivers are generally pre-paired with our keyboards at the factory. In the event your receiver and keyboard are not linked, press and hold Fn + 1 for three seconds.
- Once paired successfully, the three LEDs will blink, and you may begin typing.
- Note: The 4th LED will not blink.

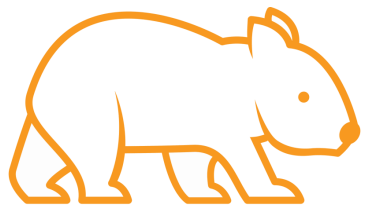


RECONNECTING YOUR WOMBAT KEYBOARD VIA RADIO FREQUENCY (RF)

4 TO RECONNECT THE ALREADY-PAIRED RF RECEIVER, ENSURE THE BATTERY IS CHARGED AND THE SWITCH IS IN THE ON POSITION. PRESS & HOLD FN +



- Once reconnected successfully, the three LEDs will blink once, together, and you may begin typing.



PAIRING YOUR WOMBAT KEYBOARD VIA BLUETOOTH

1 CLOSE ALL BLUETOOTH SETUP DIALOG BOXES

- If any Bluetooth setup dialog boxes are open, close them before proceeding with pairing.

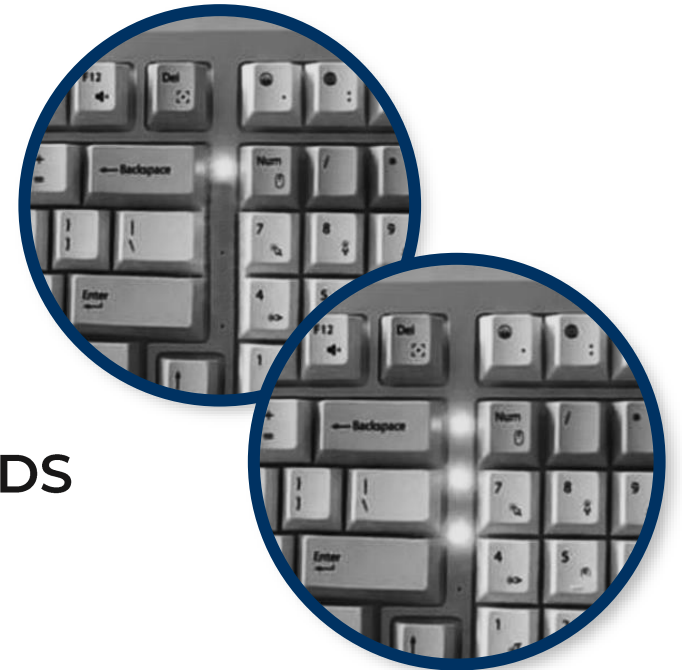
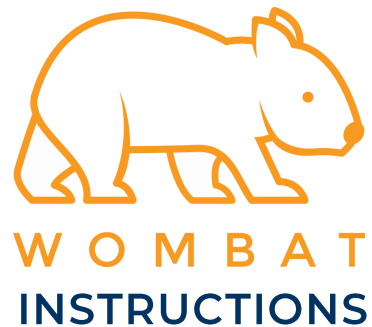
2 CHECK THE BATTERY CHARGE

Connect up to three devices to your keyboard via Bluetooth.

Pair your first device:

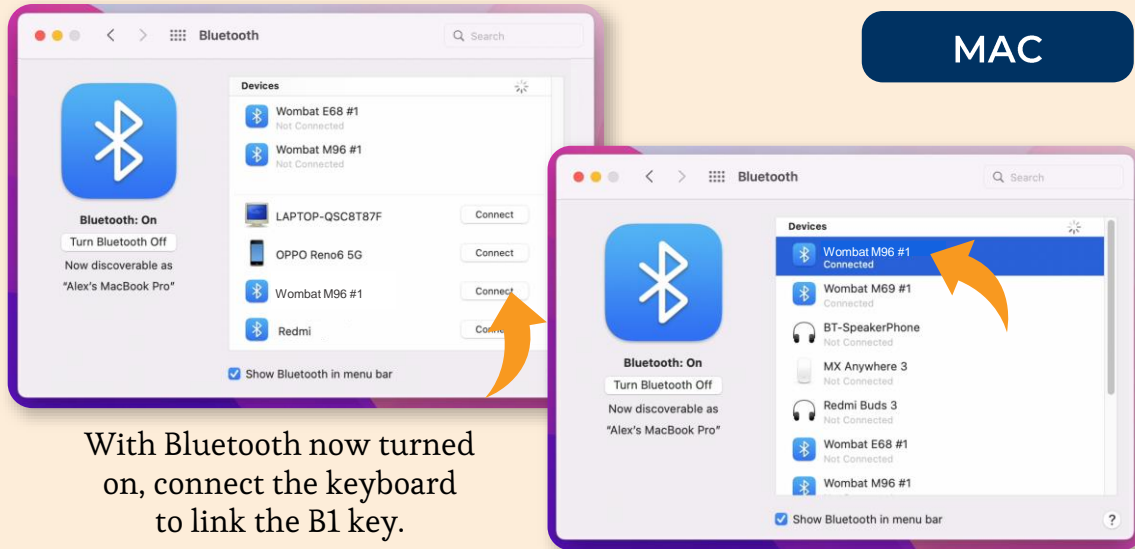
3 PRESS & HOLD FN + FOR 3 SECONDS

- The top LED will blink once, then all three will blink together.
- Note: the 4th LED will not blink.



PAIRING YOUR WOMBAT KEYBOARD VIA BLUETOOTH

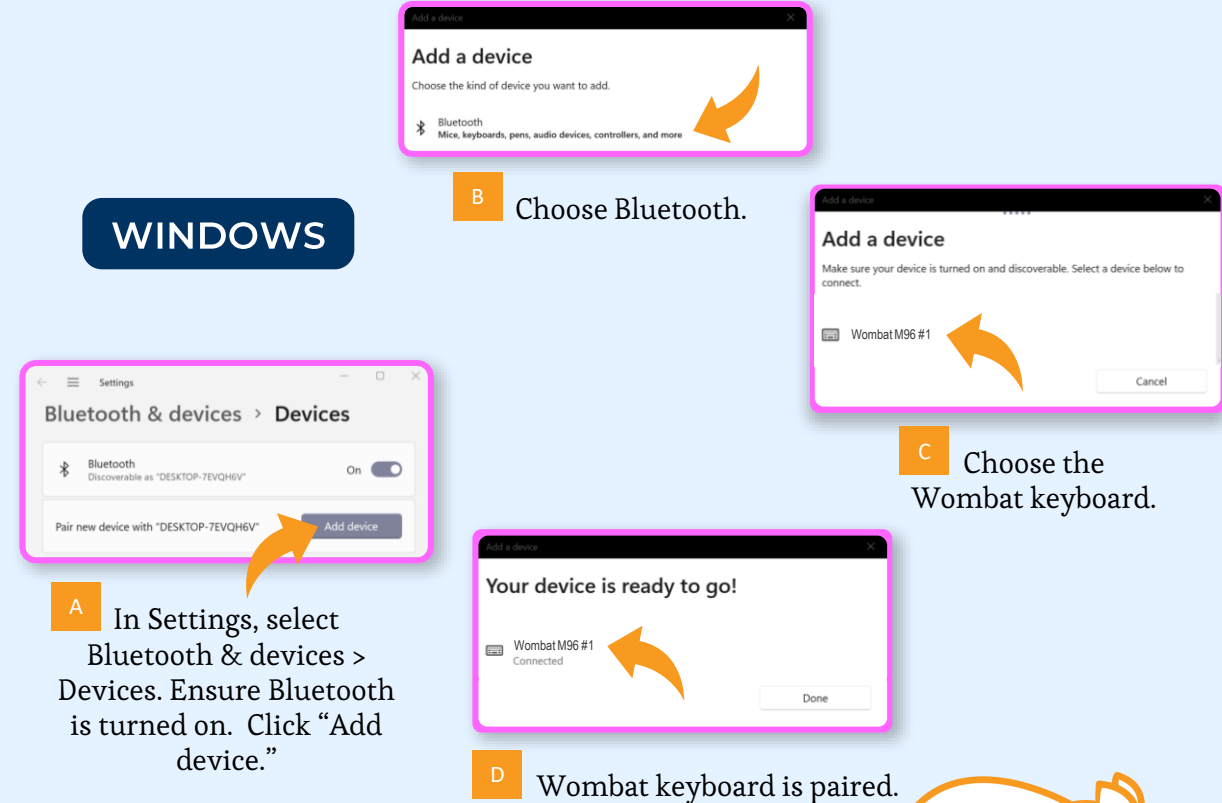
4 CONNECT TO BLUETOOTH



Wombat keyboard is connected and ready for typing.

5 REPEAT THE SEQUENCE FOR  AND  IF YOU WISH TO CONNECT THE KEYBOARD TO OTHER HOSTS

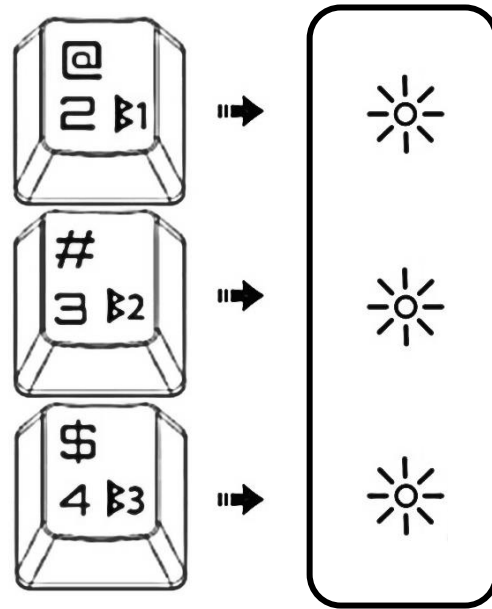
WINDOWS



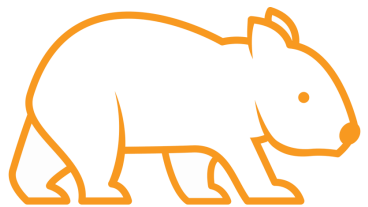
RECONNECTING YOUR WOMBAT KEYBOARD VIA BLUETOOTH

6 RECONNECT TO A PAIRED HOST

- Ensure the battery has charge and the switch is in the On position.
- Press Fn + B1, or B2, or B3 once and wait for the corresponding LED to blink once.



The LEDs correspond to the three bands of Bluetooth



Note: The keyboard must be paired whenever connecting to a new computer.



W O M B A T

KEY SOURCE INTERNATIONAL



1 (510) 562-5000



info@wombatkeyboards.com



www.wombatkeyboards.com