



W O M B A T

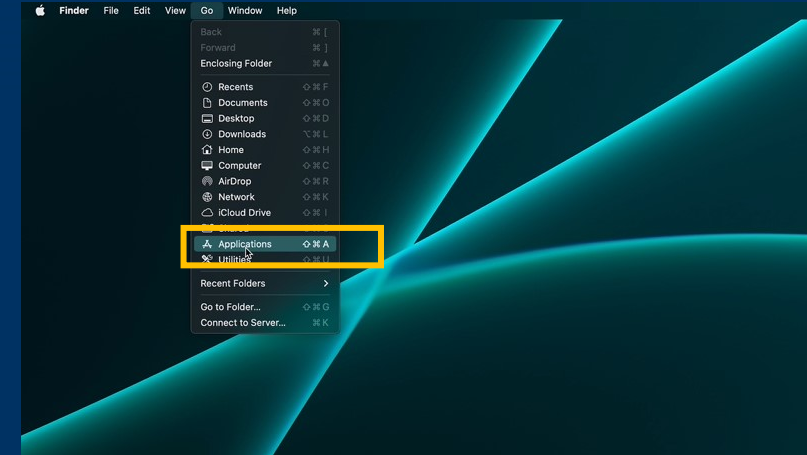


MAPLE PRO INSTRUCTION

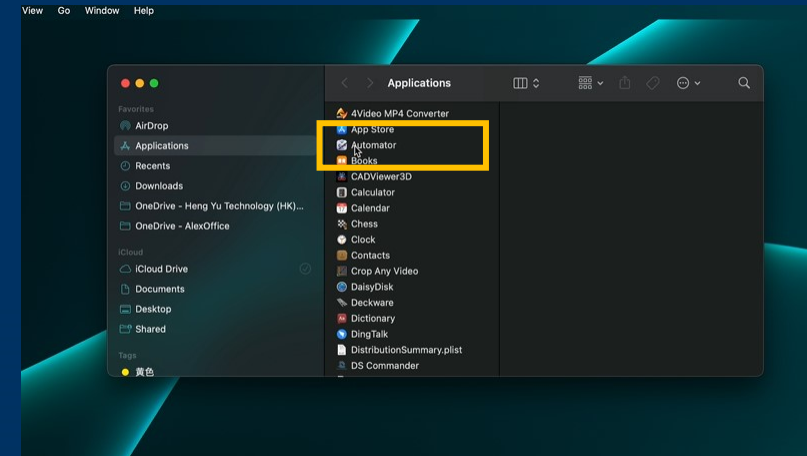
Setup for Safari hot key



1. On the menu bar click “Go” and then click ”Applications”

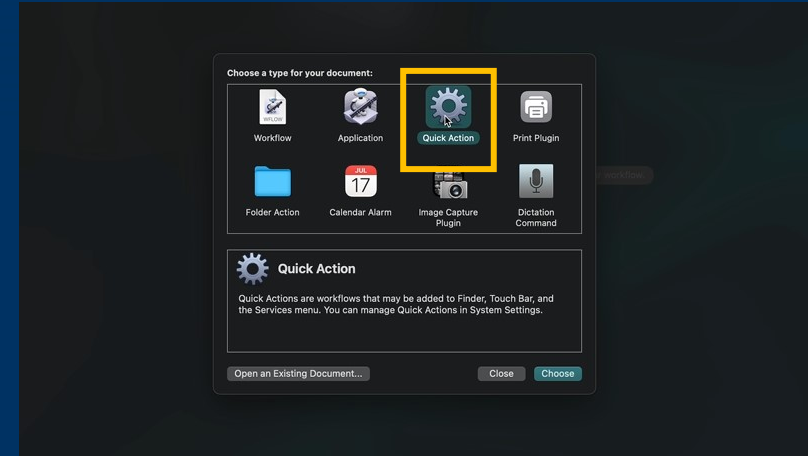


2. Then click “Automator”

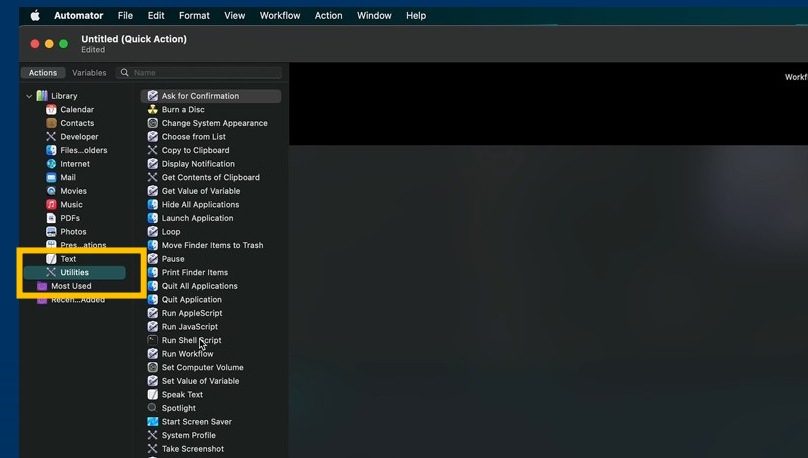




3. click “Quick Action”

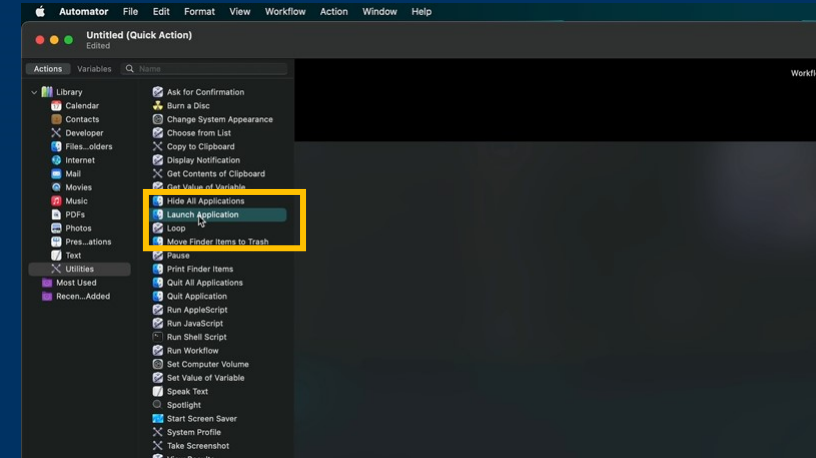


4. Move the cursor to the Left menu and click “Utilities”

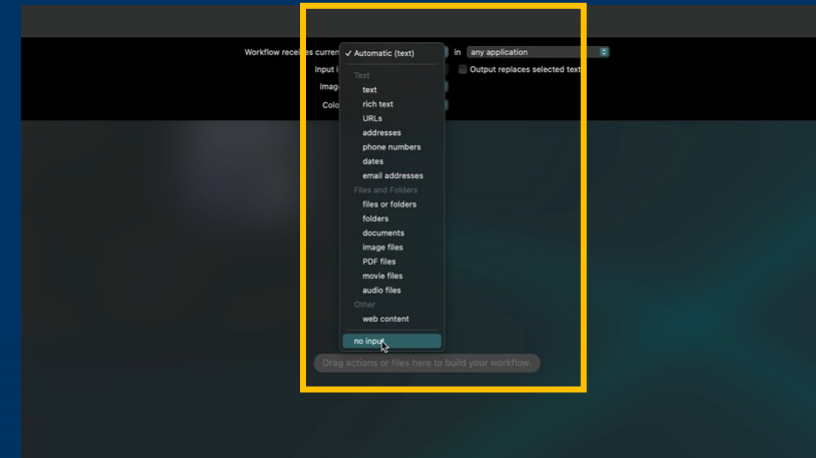




5. Then drag and drop the “Launch Application” to the right side “Gray” area.

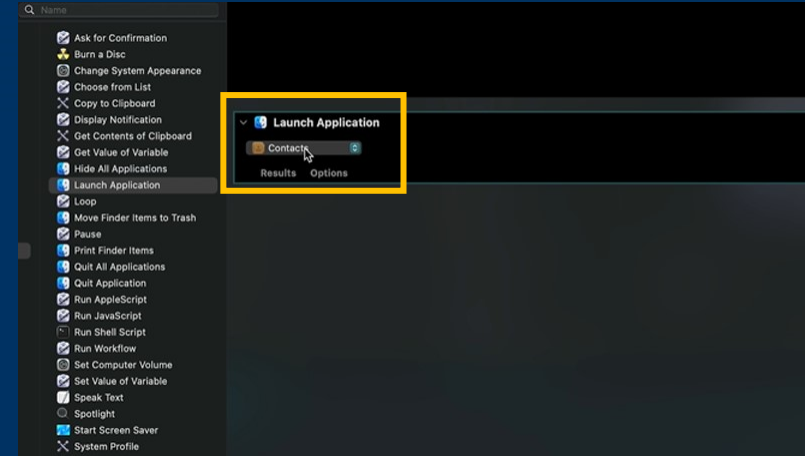


6. Set “Workflow receive current” to “no input”

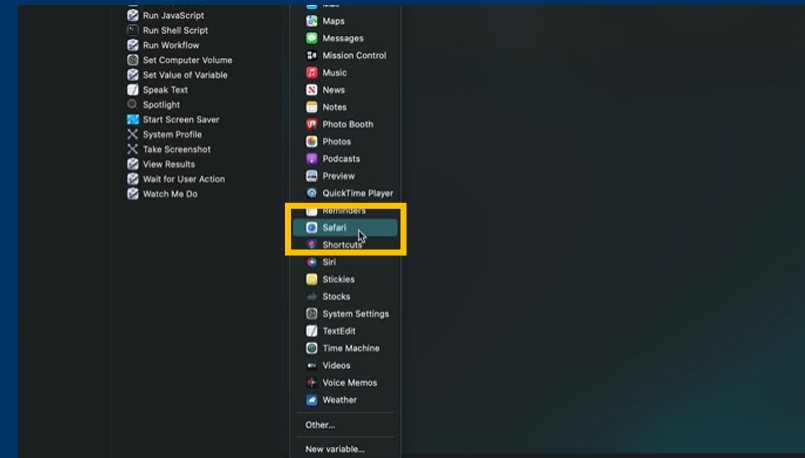




7. Click the drop down manual in “Launch Application”,

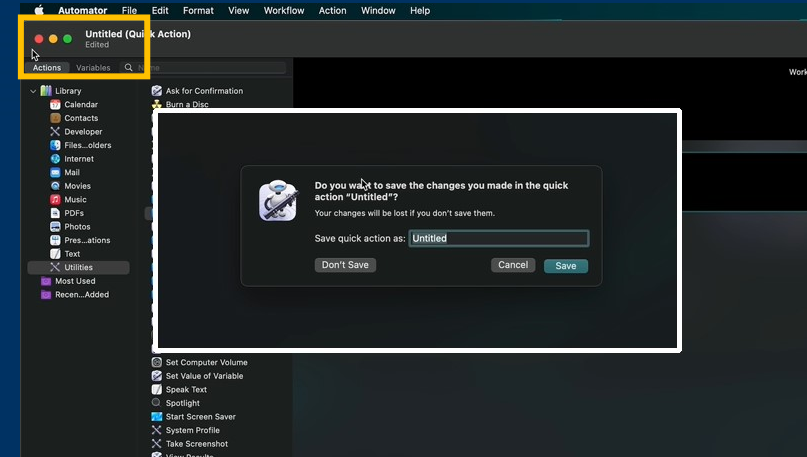


8. Find “Safari” and click it

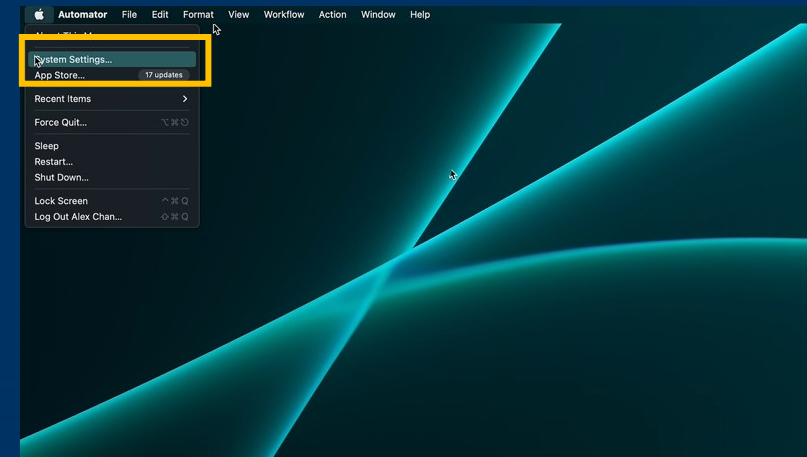




9. Click “close” on the top left corner, then save the quick action as ”Call Safari”

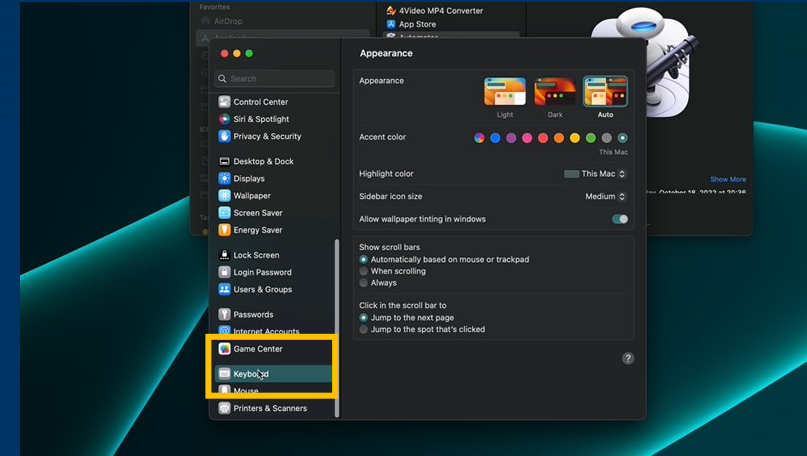


10. Go to the Apple menu again, click “System Settings”

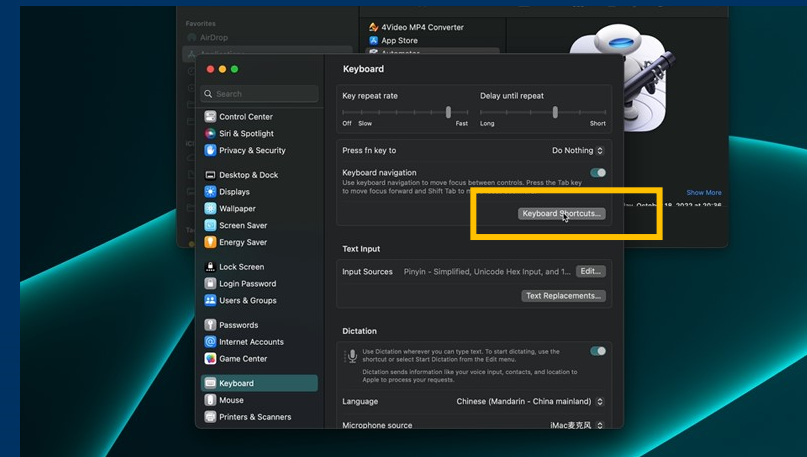




11. Find and click “Keyboard”

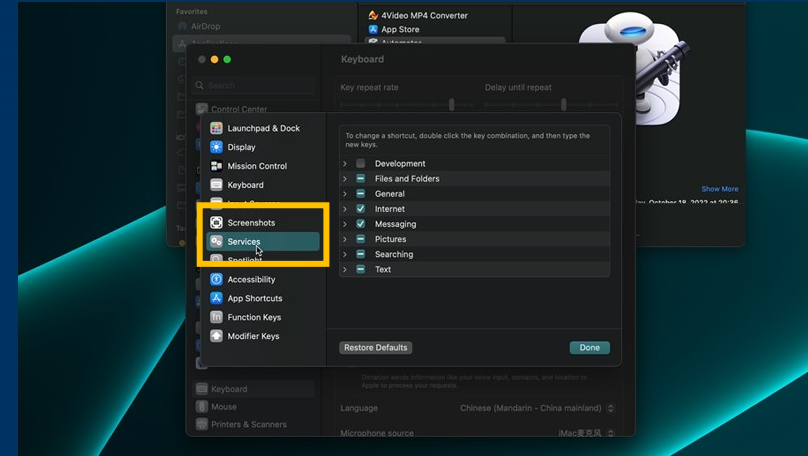


12. Click “Keyboard Shortcuts”

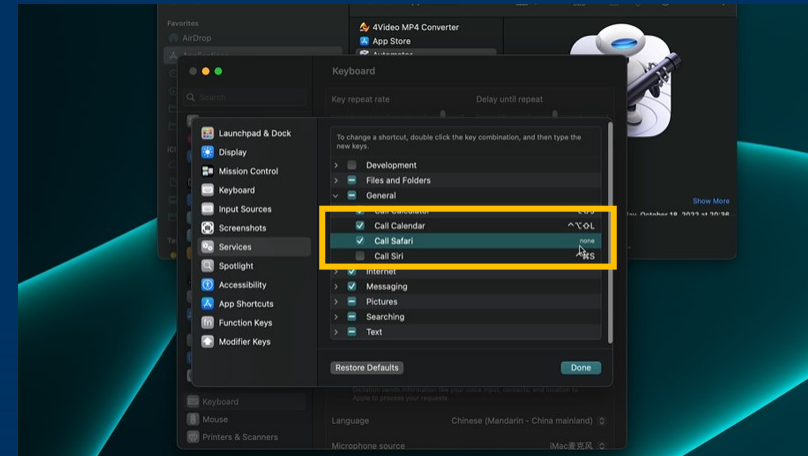




13. Find and click “Services” on the Left side

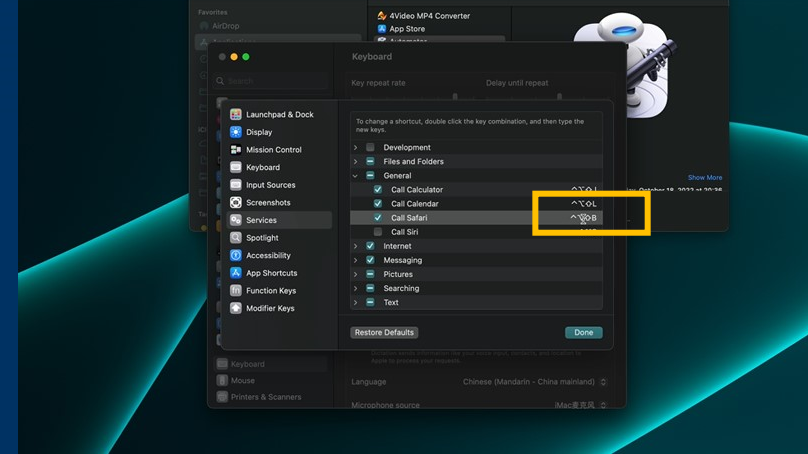


14. Check the box “Call Safari”, then click “none” at the back

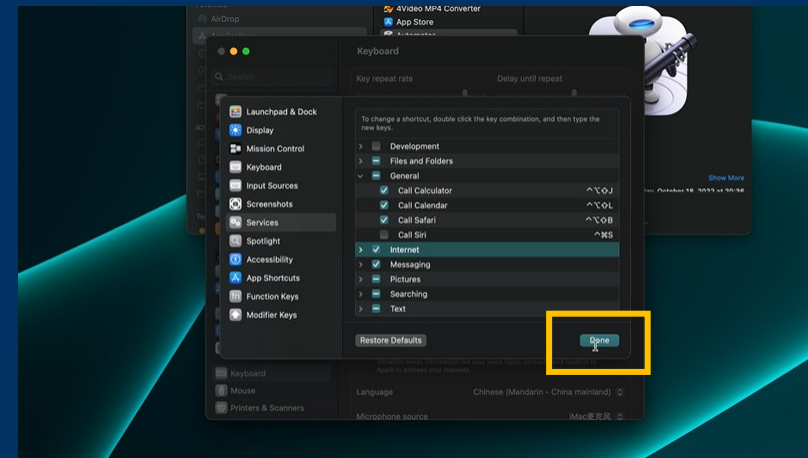




15. Press these keys on the keyboard:
“Control, Option, Shift and B”



16. Click “Done” to save the setting,
setup completed.





17. Now you can press the hot key on your MAPLE PRO to invoke the Safari(or default browser)

